



RAJSHREE SUGARS & CHEMICALS LTD

Environment, Social and
Governance Report
2023 - 24

ESG - CONTENTS

GENERAL

- Business Overview

- Our Value Chain

ENVIRONMENT

- Goals and Setup

- Plastic Waste Management

- Water Management

- Energy Management

- Green Belt Development

- Control on Air and Water Emissions

SOCIAL

- Quality Education

- Community Health Check up & CSR at our Units

- Employee Learning & Well Being

- Safety @Work

- Employee Demography

GOVERNANCE

- Board Tenure

- Committees

- Tax Strategy

- Advocacy

- Code of Conduct & Ethics

- Policy against Sexual Harassment of Employees

- Whistle Blower Policy

- Internal Audit

BUSINESS OVERVIEW



Registered Office : Coimbatore, Tamil Nadu



FY24 Revenue: INR 776.38 Crs



Key Management



Ms. Rajshree Pathy
Chairperson
DIN 00001614



Mr. R. Varadarajan
Whole Time Director
DIN 00001738

- Rajshree Sugars & Chemicals Limited (RSCL) is an integrated sugar company with three manufacturing facilities in Tamil Nadu
- The Company manufactures sugar (S30), industrial alcohol, generates Green power (part of which is for captive consumption and rest is exported to the Grid) and also Organic Manure.
- All the manufacturing locations are in close proximity to Tuticorin and Chennai Ports.

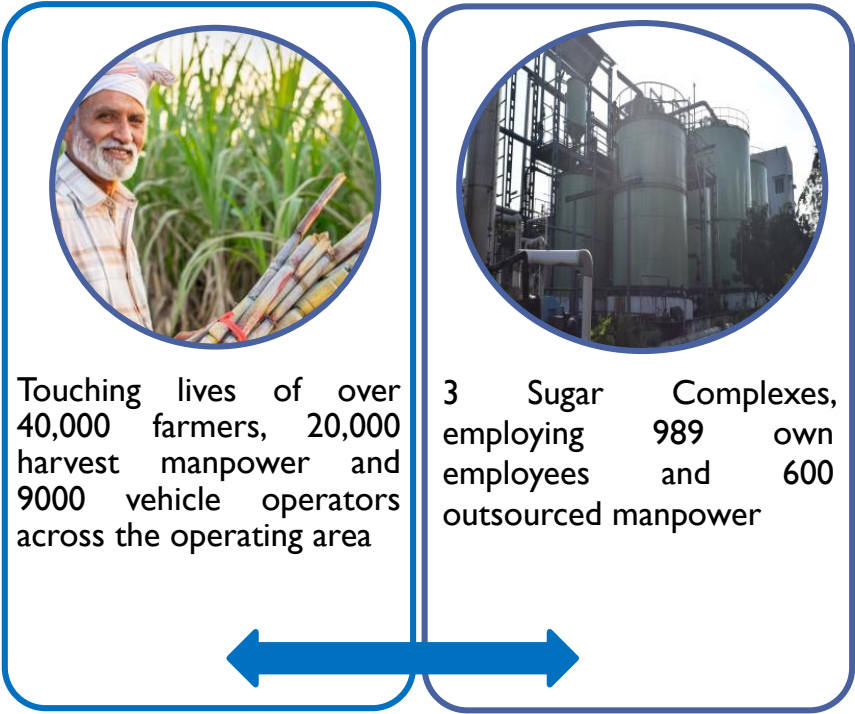
CAPACITY UTILIZATION

Sugar	Distillery	Cogeneration	Organic Manure
•1,54,369 MT	•240 Lakh Ltrs	•2233 Lakhs Units	•2912 tons

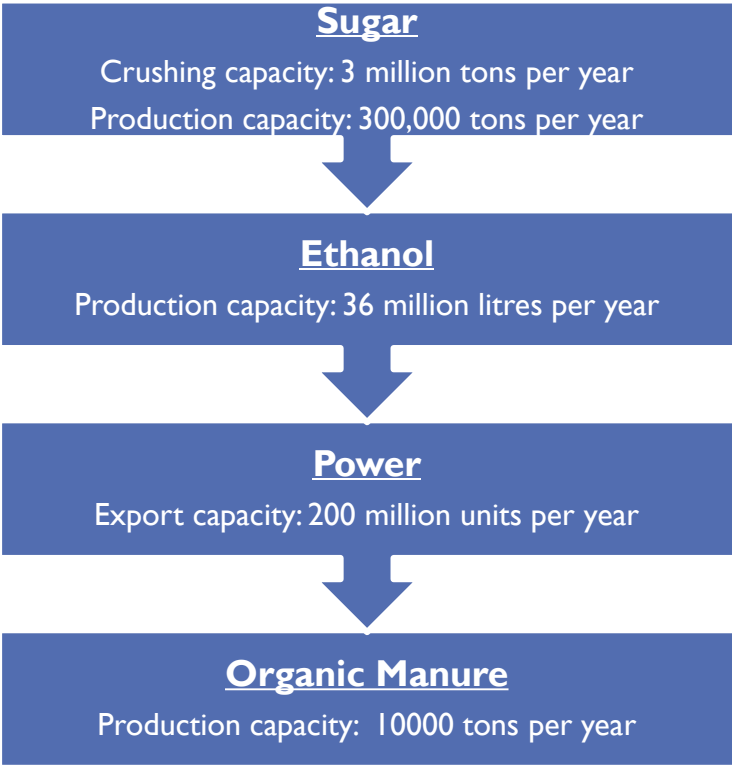
Sugar division accounted **71%** of total revenues while the Distillery division and Co-generation division account for **19% and 10%** of revenues respectively

* Tons crushed per day ** Kilolitres per day # Mega watts per hour

OUR VALUE CHAIN



CAPACITY TO DELIVER



ESG JOURNEY - HIGHLIGHTS

Clean
Development
Management

ZERO LIQUID
DISCHARGE -
Distillery

ISO 9001:2015
Certified –
Varadaraj Nagar
Unit

Hiring of Local
Talent

Renewable &
Sustainable Energy

Development of
Entrepreneurs

Cane Development
through R&D and
Extension activities

Corporate
Responsibility

ENVIRONMENT

Goal and Establishment Setup

Being an Economic, Socio and Environmental responsible organization, we have established state-of-art Manufacturing units. This not only entails us to meet the norms of Pollution Control but further extends to reach out to the community by supporting Rain Water Harvesting initiatives and developing Green Belt areas around our Units.

World Environment Day

5th June 2023 – A day for our team to renew our commitment to conserve the environment today, that the future generations will be able to lead a better life. It is a day on which we spread awareness about the environment and the need to conserve it. Moreover, we advocate for a greener environment by initiating tree planting activities.



World Ozone Day was celebrated on 16th Sep 2023, Conducted awareness camp in our factory premises and highlighted the importance of Ozone layer. Tree saplings were planted in our factory premises.



COGENERATION - First Sugar factory in India to register it's cogeneration plant to produce clean energy using "Bagasse" for Clean Development Mechanism (CDM) under the Kyoto Protocol, in 2005, earning Carbon Credits. The actual emission reduction has been verified as 79049 tonnes of CO2 for the period 1st October, 2005 to 30th September, 2006.

We have continued to use Bagasse to produce electricity at all our Cogen Units thereby producing clean energy and reducing the carbon footprints.



As per The Plastic Waste Management Rules, 2016 to comply with the Extended Producer Responsibility (EPR) which is registered with CPCB the certificate is valid up to 31.08.2024. We have engaged CPCB approved PRO (Producer Responsibility Organization) agency for effective and efficient collection, segregation and transportation of the material to the waste disposal facility.

This Financial year, the agency had collected and disposed 548 mt of plastic waste on behalf of Rajshree Sugars.

Water Management

Sugar Cane contains 70% water and this caters to most of our process requirements. Further, the condensate water generated in the process is cooled and reused in the sugar process instead of raw water.

Various initiatives are taken up at the Unit level

In Varadaraj Nagar Unit, blow down water from boiler is used for wet scrubber make up water in place of raw water.

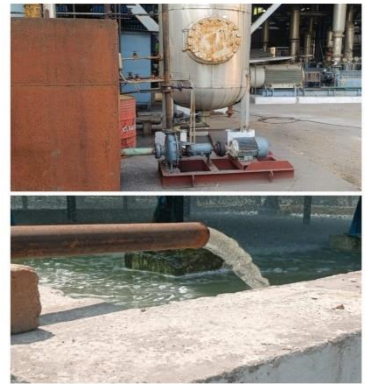
Raw water saving - 15 m³ / day

In Mundiymbakkam Unit, by installing a new cooling tower, excess condensate is cooled, recycled and used in washrooms and spray pond make up..

Raw Water saving - 109 m³ / day.

In Semmedu Unit, Sugar Co-gen boiler blow down water is cooled and used for cooling tower make up.

Raw water saving – 7 m³/day



ENVIRONMENT

Energy Management

RSCL is well equipped with latest steam and power saving economical devices which resulted in low steam % and power per ton of cane.

Green Power

By converting cane syrup to ethanol,, we produce a sustainable fuel that reduces carbon emissions and enhances air quality, . Our Varadaraj Nagar Unit, has produced 19.4 lakh liters of ethanol in the 2023-24 period, contributing to the Ethanol Blending Program of our Government.



At Unit-I, Varadaraj Nagar

In our Sugar melter, we successfully implemented a strategy to replace 40 lbs of steam with turbine exhaust. This move not only reduced steam consumption by 1 ton/hr but also generated an additional 0.1 MW/hr of power.

At our distillery, we focused on optimizing steam consumption. Through modifications to our steam lines, we successfully reduced live steam consumption from 5.25 tons/hr to 3 tons/hr. Additionally, this initiative allowed us to generate an extra 0.3 MW/hr of power.

In our Co-generation system, we upgraded by replacing the ABB Digital AVR with auto-synchronization capability. This enhancement boosted alternator generation by 200 units/hr while keeping the automatic power factor consistent with the existing steam consumption.

The above initiatives resulted in savings of 6.38 lacs units of power translating to Rs. 25.54 lacs



ENVIRONMENT

Switch to LED

In Mundiymbakkam, conventional bulbs were replaced with LED bulbs in the mill house area and curing house. Additionally, in Gingee, there was a comprehensive replacement initiative:

- 300W street lights were replaced with 100W LED fittings.
- 40W tube light fittings were replaced with 20W LEDs.

A new introduction included 45W well glass LED fittings in the sugar plant. Furthermore, 150 units of 20W tube lamps were replaced by 9W LED lamps, and 20 units of 300W HPSV street light fittings were replaced with more efficient 50W LED lamps. These measures collectively resulted in a significant reduction in power usage by approximately 138 megawatt-hours (mWh) or Rs. 7.60 lakhs



Green Belt Development

In Unit-I & Unit 3, as per TNPCB “Kurunkadugal” scheme, we have planted 1000 nos of samplings in our factory premises at an area of 25000 sq.m and have donated 3000 nos tree saplings to the Semmedu Village.

In Unit-2, Green belt development is being continuously done in and around our premises by planting various spices.



Control of Air and Water Emissions

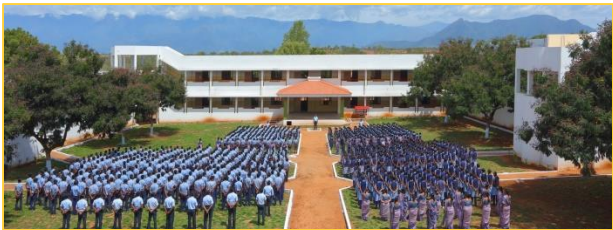
In Varadaraj Nagar, we implemented several enhancements to improve the efficiency of the wet scrubber. These upgrades included modifying the wet scrubber nozzles with a two-layer arrangement to enhance water spraying in the flue gas. Additionally, we increased the size of the wet scrubber pit to facilitate better filtration. As a result, the wet scrubber’s efficiency significantly improved, leading to a notable reduction in suspended particulate matter (SPM) levels in the flue gas.

Social Vision : Providing education and a chain of employment opportunities for building a self reliant rural Tamil Nadu across our Operations.

Topics	Progress in Fiscal of 2023 - 24
Quality Education	1925 children study in safe and nurturing environments
Benefiting Agricultural Communities	Bringing a vide diversity of Farmers, Harvest Manpower and Transporters together
Community Wellness	Medical camps for the community surrounding our Units
Learning Culture	Inculcating the habit of continuous learning
Committed to Health, Safety & Hygiene	In-house Clinics, Safety committees, PPEs and Workshops to build a strong Culture
Beyond the Campus	Providing Scholarship to Children of employees

Quality Education

Two schools have been founded with an objective to cater to the needs of the local community and to provide quality education.



Srivalli Varadaraj Matriculation School

Andipatti, Theni District, TN
Managed by GV Memorial Trust

Rajshree Sugar Ramakrishna Vidyala Matriculation Higher Secondary School

Munidiyambakkam, Villupuram District, TN
Managed through Rajshree Sugars Sri Ramakrishna Educational Society



Our vision is to create proactive global citizens, helping them to unfold their inherent talents to do their best while instilling in them appropriate and desirable ethical values to make students productive and responsible members of the society.

Corporate Responsibility @ Rajshree Sugars

GENERAL MEDICAL CAMP AT KALATHAMPATTU & SATHIYAMANGALAM VILLAGE



A "General Medical Camp" in association with Ramana Maharishi Rangamal Hospital, Thiruvananthapuram was organized at Kalathampattu Village. The camp was inaugurated by The Panchayat President. About 115 villagers benefited in this camp.

Another Medical Camp in association with Sri Venkateshwara Medical College and Hospital, Pondicherry was conducted at Sathiyamangalam village. It was inaugurated by The Panchayat President and The Counsellor of Sathiyamangalam. About 93 villagers benefited from the camp.

A Shed for the Red Brigade

At the request of the Fire Brigade, we provided a Shed with galvanized sheets to house the Fire Engine at the Vikravandi Fire Station.



On the Occasion on our Founder’s Day, 1st Nov 2023, a Blood Donation camp was organized in association with the Govt General Hospital, Tindivanam. 36 Units of blood was donated.



Some of our proud donors

Employee Well Being

Various health camps have been conducted at the Units keeping in mind that awareness is the key to early deduction of any disease and thereby proper treatment.

TB SCREENING CAMP



141 Employees were screened for Tuberculosis in a NTEP (National Tuberculosis Elimination Program) Camp organized in association with Primary Health Center, Sathiyamangalam.

A “Cancer Awareness Camp” for our employees was organized in association with Adayar Cancer Institute, Chennai on 10th Aug 2023. Around 104 employees were participated.



A Dental Screening Camp in association with Karpaga Vinayaga Institute of Dental Science, Maduranthagam was organized and 133 employees benefited from the Camp.



An “Eye Checkup Screening Camp” in association with Dr.Agarwal's Eye Hospital, Villupuram on 06th Feb 2024. 103 employees benefited from this camp.

SAFETY @ WORK

Employee Safety is the core of Rajshree Sugars and all our activities. Employees are provided with PPEs and trainings as we strive towards achieving “ZERO” Accidents

National Safety day – 4th March 2024



Safety Week Competitions

Quiz



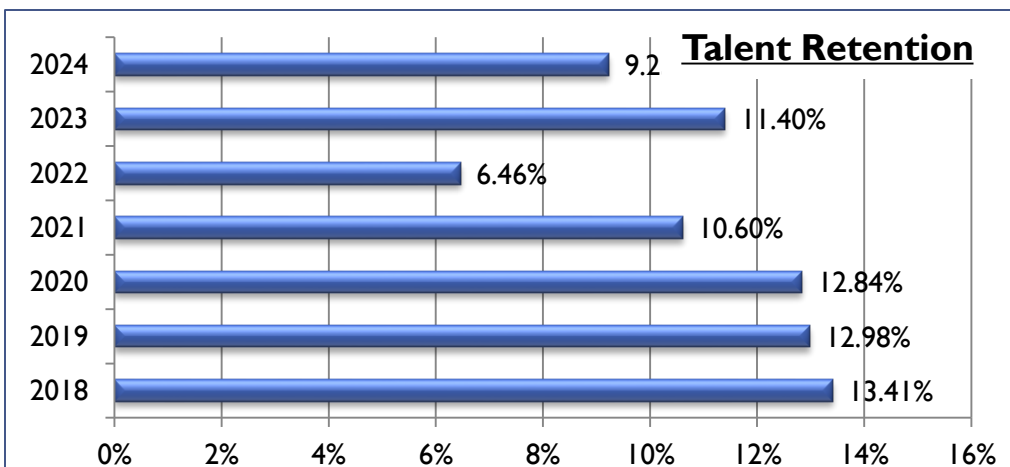
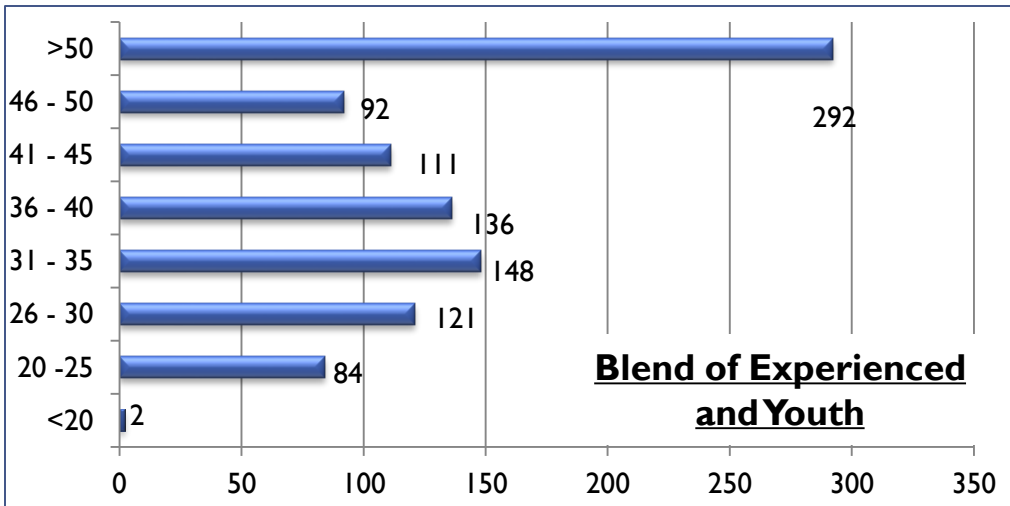
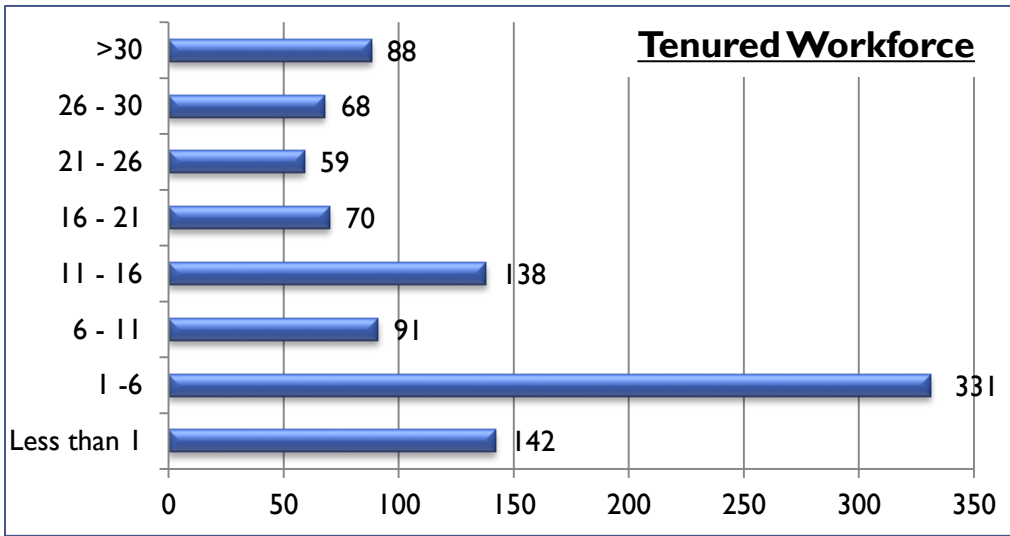
Themed Drawing



Themed Activities



PEOPLE



BEYOND OUR CAMPUS

Scholarships to Employee’s children to encourage them to pursue Higher education

Course	Scholarship (per year)
ITI, Diploma	Rs.2000/-
Any Degree	Rs.3000/-
Professional Courses	Rs.5000/-

During 2023 – 24, Rajshree Sugars offered Rs.1.79 lacs as scholarships to 49 Students who pursued Higher Education.

Employees’ Children are further provided Tuition fee concession of 50% at our Schools.

GOVERNANCE

Board Tenure	<ul style="list-style-type: none"> The current Board's average tenure, including Independent Directors, is 13 years. Independent Directors can serve up to 5 years initially and may be re-elected for a second term of up to five years based on performance evaluation.
Committees	<ul style="list-style-type: none"> Company is having various Committees constituted by the Board of Directors (both mandatory and non-mandatory committees) to review and recommend specified matters, as per the requirements of the Companies Act, 2013 and SEBI Regulations such as Audit Committee, Nomination Remuneration Committee, Stakeholders Relationship Committee, Agriculture Committee.
Tax Strategy	<ul style="list-style-type: none"> The Company is tax compliant and utilizes the provisions of the Income Tax Act, as applicable, for tax saving purposes.
Advocacy	<ul style="list-style-type: none"> The Company focuses on developing and maintaining a cordial relationship with relevant policy makers in the State and Central Government, business organizations, industry associations, educational institutions, and community organizations for smooth running of the business.
Code of Conduct & Ethics	<ul style="list-style-type: none"> Our Code of Conduct & Ethics helps us to maintain the better relationship with the internal and external Stakeholders. It complies with the legal requirements of applicable laws and regulations and ethical handling of conflicts of interest.
Policy against Sexual Harassment of Employees	<ul style="list-style-type: none"> The Company is an equal opportunity employer and is committed to creating a healthy working environment that enables employees to work without fear of prejudice, gender bias and sexual harassment. The Company believes in treating its employees with dignity.
Whistle Blower Policy (Vigil Mechanism)	<ul style="list-style-type: none"> The Whistle blower policy has been formulated and provides a mechanism for directors and employees of the company to raise their voice against any unethical practices in the company and to approach the Chairman of the Audit committee for any such reporting. The policy is available in our website https://www.rajshreesugars.com/
Internal Audit	<ul style="list-style-type: none"> The Internal Audit is assigned to independent Chartered Accountants and their periodic reports are submitted to the Board. The remedial actions are being carried out based on the findings by the Internal Auditors and reported to the Board.